



- Symmetrical high-speed Internet access
- Auto detection to support EFM or ATM with single device
- Point-to-point connectivity

## EFM/ATM 8-wire Auto-detect G.SHDSL.bis Gateway

### Benefits

#### Symmetrical high-speed Internet access

The ZyXEL P-794H is a high-performance G.SHDSL.bis gateway for small/medium offices to have Internet access and LAN-to-LAN applications over the existing copper line. The P-794H makes full use of the advanced G.SHDSL.bis technology with symmetric data rates of up to 5.69 Mbps, 11.38 Mbps, 17.07 Mbps, or 22.76 Mbps over standard 2-wire, 4-wire, 6-wire, or 8-wire telephone lines, respectively.

#### Auto detection to support EFM or ATM with single device

The P-794H is a G.SHDSL.bis gateway with high flexibility that supports ether ATM mode or EFM mode to provide high-speed LAN-to-LAN connection and Internet access for small businesses or branch offices through G.SHDSL.bis connection over the copper line.

#### Point-to-point connectivity

Users can set up a point-to-point connection between two P-794H devices. The feature offers a cost-effective, high-speed connection for high-bandwidth applications.

### P-794H G.SHDSL.bis 4-port Bonding Gateway





## P-794H G.SHDSL.bis 4-port Bonding Gateway

## Specifications

### System Specifications

#### Router/Bridge

- NAT/PAT support
- PPPoE (RFC2516)
- IGMP v1/v2
- IGMP Proxy/fast leave/snooping
- Configurable as either server or client mode
- Support IPOA/IPOE
- DMZ support
- Support Port-based VLAN
- VPN pass-through IPSec and L2TP
- QoS support VBR-rt, VBR-nrt, CBR and UBR

#### G.SHDSL Compliance

- Support ITU-T G.991.2/G.994.1 standards
- Support ITU-T G.998.1 (G.bond)(ISOS 10)
- Extended Rate Bonded SHDSL- (G.991.2 Annex F, G)
- TC-PAM line modulation
- EFM/ATM configurable
- OAM IEEE 802.3 chapter 57 compliant
- IEEE 802.3 2BASE-TL (aka 802.3ah) compliant
- Rate negotiating/Manually rate adaptation configuration
- 2-wire/4-wire/6-wire and 8-wire mode auto detect in either ATM mode and EFM mode
- Transmission rate up to 5.69 Mbps (2-wire mode)
- Transmission rate up to 11.38 Mbps (4-wire mode)
- Transmission rate up to 17.07 Mbps (6-wire mode)
- Transmission rate up to 22.76 Mbps (8-wire mode)
- Support Bonding based on EFM and ATM\*

#### ATM Support

- Multiple protocols over AAL5 (RFC1483)
- PPP over ATM (RFC 2364)
- ATM AAL5 supported

- Support 8 PVCs
- ATM Forum UNI3.0/4.0 PVC
- OAM F4/F5 Loopback, RDI, AIS
- UBR CBR, and nrt-VBR traffic shaping

#### EFM Support

- EFM mode compliant to IEEE 802.3, G.998.2
- PPP over Ethernet (RFC2516)
- Support of OAMPDU information and functionality (ITU-T Y.1731)
- OAMPDU Loopback Control
- VLAN base QOS (802.1P/Q)

#### Internet Access Sharing

- 512 NAT sessions
- NAT server (Port forwarding)
- Dynamic DNS (www.dyndns.org)
- DHCP server/client/relay

#### Security

- User Authentication (PAP, CHAP) with PPP (RFC 1334, RFC 1994)
- Microsoft CHAP (ISOS 10)
- Stateful packet inspection firewall (SPI)
- Packet filter
- Prevent Denial of service (Dos)
- Access control of service
- Real-time attack alert and log

#### Network Management

- TR-069 Remote management
- Web-based Configuration
- Command-line interface (CLI)
- Password-protected Telnet support
- SNMP V1/V2c with MIB II
- TFTP & FTP firmware upgrade and configuration backup
- TR-069 HTTPS
- Secure Shell function (SSH)

\* Firmware upgradeable for future enhancement

### Hardware Specifications

- Two RJ-11 interface for 8 wire G.SHDSL.bis WAN port
- Four auto-sensing 10M/100M Ethernet LAN ports (RJ-45)
- One Reset switch button
- One Power DC jack
- Status LEDs indicator: POWER, CO MODE, LAN, DSL, ALARM
- One CID port

### Physical Specifications

- Item dimensions (WxDxH):  
210 x 200 x 43 mm (8.27" x 7.87" x 1.69")
- Item weight: 849 g (1.88 lb)
- Packing dimensions (WxDxH):  
321 x 240 x 73 mm (12.63" x 9.45" x 2.87")
- Packing weight: 1,459 g (3.22 lb)

### Environmental Specifications

#### Operating Environment

- Temperature: 0°C to 40°C (32°F to 104°F)
- Humidity: 20% to 90% RH (non-condensing)

#### Storage Environment

- Temperature: -20°C to 60°C (-4°F to 140°F)
- Humidity: 20% to 95% RH (non-condensing)

### Certification

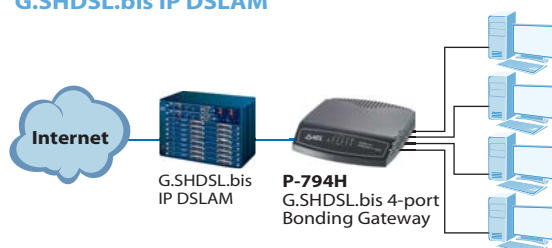
- CE
- FCC Part 15 (Class B)

## Rear Panel

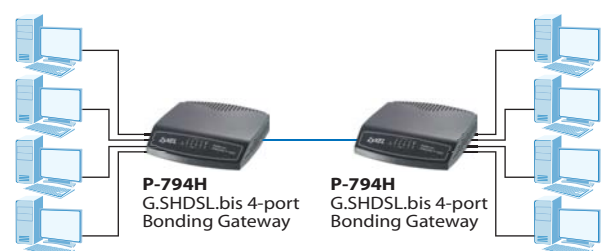


## Application Diagram

### Connection to G.SHDSL.bis IP DSLAM



### Extra-LAN



For more product information, visit us on the web at [www.ZyXEL.com](http://www.ZyXEL.com)



Copyright © 2011 ZyXEL Communications Corp. All rights reserved. ZyXEL, ZyXEL logo are registered trademarks of ZyXEL Communications Corp. All other brands, product names, or trademarks mentioned are the property of their respective owners. All specifications are subject to change without notice.