



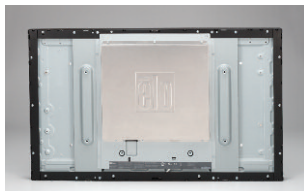
3243L 32" Open-frame Touchmonitor

The Elo Touch Solutions 3243L 32-inch full HD open-frame touchmonitor provides smooth dual-touch performance with IntelliTouch Plus surface acoustic wave technology. The 3243L touchmonitor is 2.3" (59mm) in total thickness and less than 1" (25mm) in border width. The new sleek mechanical design enables thinner and smaller kiosk design for various applications like retail, hotels, gaming, transportation and other commercial uses. Applications in demanding public access environments are enabled with UL60950 product compliance.

The 3243L features a unique, injection-molded bezel with a virtually invisible water-resistant seal, making it a good choice for the rigors of public use. Narrow borders, multiple mounting options, and a USB touch interface add to the versatility of the 3243L.

Features

- 1920 x 1080 full HD provides a bright, high contrast display with wide-view angle that easily attracts and holds the user's attention
- IntelliTouch Plus surface acoustic wave technology provides dual-touch performance
- New sleek design: 2.3" total thickness; less than 1" borders; 30% less total weight—27 lbs (12.3kg)
- LED backlighting reduces power consumption by 60% and generates less heat than traditional CCFL backlights
- Commercial durability enabled with UL60950 product compliance
- Multiple mounting options are available
- Worldwide agency approvals and a 3-year standard warranty



3234L 32" Open-Frame Touchmonitor

| | |
|---------------------------------------|---|
| Model | 3243L |
| Color | Black |
| Active Display Area | 27.49" x 15.47" (698.4mm x 392.85mm) |
| Dimensions* | 28.95" x 17.44" x 2.28" (735.4mm x 443mm x 58mm) max |
| LCD Technology | Active matrix TFT LCD |
| Diagonal Size | 31.5" |
| On-Screen Display (OSD) | Accessible through switches on the OSD Control Remote accessory. Controls: Menu, Up, Down, Select; Settings: Brightness, Contrast, Clock, Phase, H-position, Vposition, Auto-Adjust, Aspect Ratio, Sharpness, Color Temperature, OSD Timeout, OSD Language, Recall Defaults, Video Source; Languages: English, French, Italian, German, Spanish, Simplified Chinese, Traditional Chinese, Japanese; Lockouts: OSD, Power |
| Mounting Options* | 400mm x 200mm VESA 4-hole mounting interface on rear of unit Side mounting brackets included with unit |
| Aspect Ratio | 16:9 |
| Native Resolution | 1920 x 1080 |
| Preset Video Timings | 640x480 60Hz, 800x500 60Hz, 800x600 56, 60Hz, 1024x768 60Hz, 1280x720 60Hz, 1280x960 60Hz, 1280x1024 60Hz, 1360x768 60Hz, 1366x768 60Hz, 1440x900 60Hz, 1600x1200 60Hz, 1680x1050 60Hz, 1920x1080 60Hz |
| Number of Colors | 16.7 million |
| Brightness (typical) | LCD Panel: 350 nits; with Non-Touch: 315 nits; with IntelliTouch Plus: 315 nits |
| Response Time (Tr + Tf) (typical) | 6.5 ms |
| Viewing Angle (typical) | Horizontal: 178°; Vertical: 178° |
| Contrast Ratio (typical) | 3000:1 |
| Video | Analog VGA on Female DE-15 connector; HDCP-capable HDMI 1.3 on HDMI Type A receptacle connector (ET3243L-XXWA models only); Digital DVI on Female DVI-D, Dual-Link connector (ET3243L-XXAA models only) Input Video Horizontal Sync frequency range: 31.5-80KHz Input Video Vertical Sync (frame rate) frequency range: 47-63Hz |
| Power | Input power connector: IEC 60320 C14; Input power signal specifications: 100-240VAC, 50/60Hz Power Consumption (Typical): ON (monitor + AC/DC adapter): 55W; SLEEP (monitor + AC/DC adapter): 1.4W; OFF (monitor + AC/DC adapter): 0.3W |
| Weight | Unpackaged: 27.12 lbs (12.3kg); Packaged: 41.5 lbs (18.8kg) |
| Shipping Dimensions | 39.05" x 26.45" x 11.65" (992mm x 672mm x 296mm) |
| Temperature | Operating: 32°F to 104°F (0°C to 40°C); Storage: (-4°F to 140°F) -20°C to 60°C |
| Humidity (non-condensing) | Operating: 20%-80%; Storage: 10%-90% |
| Regulatory approvals and declarations | S-Mark; C-Tick; CUL, IC; CCC; CE; VCCI; KC, KCC, e-Standby; CoC; GOST; BSMI; UL, FCC; CB; RoHS, China RoHS, WEEE; UL60950 |
| Warranty | 3-year standard |
| MTBF | 50,000 hours demonstrated |

*See dimensional drawings for details

Ordering Information

| MODEL | PART NUMBER | TECHNOLOGY | INTERFACE | SURFACE TREATMENT | AVAILABILITY |
|--------|-------------|-------------------|-----------|-------------------|--------------|
| 32433L | E589724 | IntelliTouch Plus | USB | Clear | Worldwide |
| | E444804 | IntelliTouch Plus | USB | Clear | Asia |

Optional Peripherals

| PERIPHERAL | PART NUMBER |
|----------------------------------|-------------|
| Cable Kit for Replacement Cables | E378229 |
| Remote On-Screen Display (OSD) | E483757 |

To find out more about our extensive range of Elo touch solutions, go to www.elotouch.com, or call the office nearest you.

North America

Elo Touch Solutions
1033 McCarthy Blvd.
Milpitas, CA 95035-7920

800-ELO-TOUCH

Tel +1 408 597 8000
Fax +1 408 597 8050
customerservice@elotouch.com

Europe

Tel +32 (0)16 70 45 00
Fax +32 (0)16 70 45 49
elosales@elotouch.com

Asia-Pacific

Tel +81 (45) 478-2161
Fax +81 (45) 478-2180
www.tps.co.jp

Latin America

Tel 786-923-0251
Fax 305-931-0124
www.elotouch.com.ar

Elo Touch Solutions, Inc. reserves the right to change or update, without notice, any information contained herein; to change, without notice, the design, construction, materials, processing or specifications of any products; and to discontinue or limit production or distribution of any products. Elo (logo), Elo Touch Solutions and IntelliTouch are trademarks of Elo Touch Solutions, Inc.
Copyright 2013 Elo Touch Solutions, Inc. All rights reserved. DS000073, rev 03/2013

www.elotouch.com

elo TOUCH
SOLUTIONS